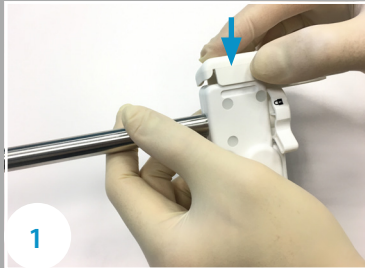


QUICK GUIDE

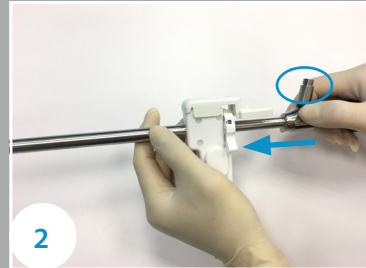
ClickClean™ In-Abdomen Laparoscope Cleaning Device



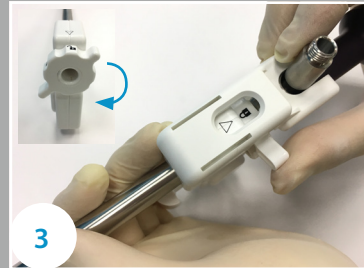
Prepare for Use



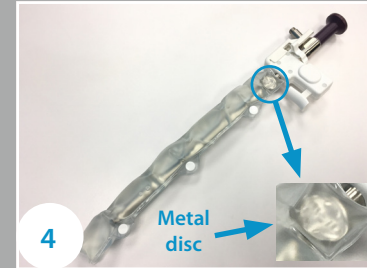
1 Open package in sterile technique, and assemble the Jig onto ClickClean Device (10mm models only).



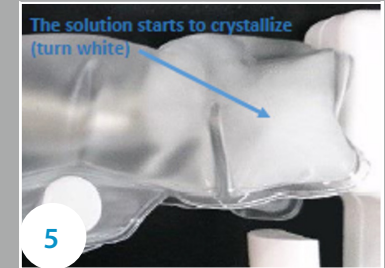
2 **Clean and dry the laparoscope** and **fully** insert into ClickClean Device. Make sure the light cable adapter is pointing upwards.



3 Rotate the locking knob clockwise until tight. The **lock mark** should be aligned with the **arrow mark**.

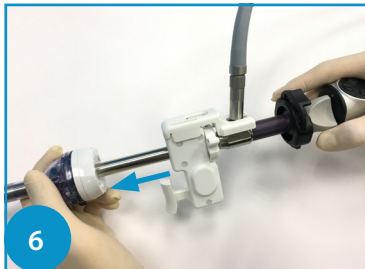


4 Wrap the scope warmer onto ClickClean/Laparoscope. Ensure the distal tip of scope is covered.

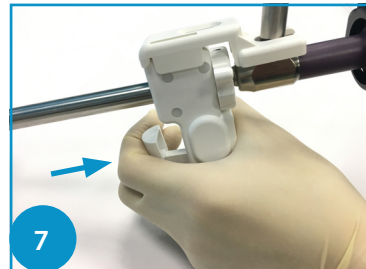


5 Bend the **metal disc** back and forth for 2-3 times until the pre-surgical warmer starts to turn white. **Heat for at least 5 minutes.**

During Use

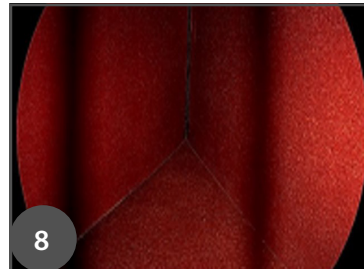


6 Remove the scope warmer, connect the camera cables, and insert the distal end of ClickClean/laparoscope into abdomen cavity via **12 mm trocar** immediately. If light reflection appeared, check whether laparoscope is fully inserted into ClickClean.



7 When the image is smeared, press the pusher of ClickClean immediately to restore view. One device provides 60 clicks. Multiple clicks may be needed per cleaning. When the image is smeared by **fluid or blood**, **immediately continue 5 clicks** to restore the view.

End of Use

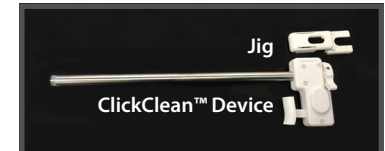


8 Black warning marks will appear on the sides of the screen, indicating the end of use. When the black marks show, setup and heat another ClickClean device as appropriate.

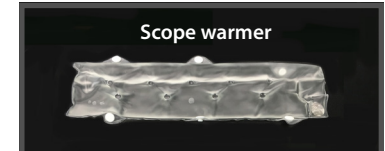


9 Turn the locking knob counterclockwise to unlock ClickClean. Remove the laparoscope and dispose the used ClickClean in accordance with hospital protocols.

In the Package



Suggested accessory



TROUBLE SHOOT

ClickClean™ In-Abdomen Laparoscope Cleaning Device

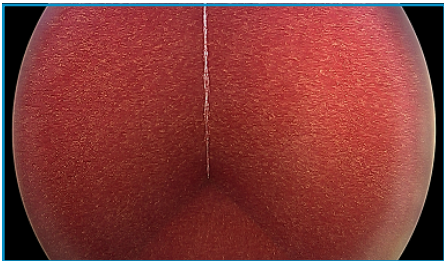


Top 5 Tips

1. No dip in fluid (most important)
2. Click right away (continue clicking to restore view)
3. Keep scope dry and clean
4. Prepare 12mm Trocar
5. Always pre-warm 5 minutes

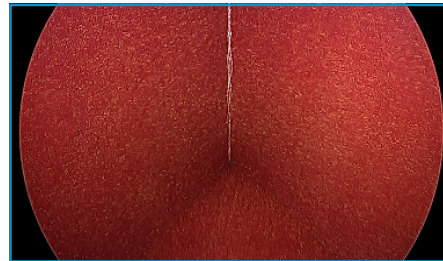
Confirm ClickClean is placed correctly

- Insert scope to the distal end of ClickClean
- Check image quality before surgery
- Rotate the scope in the lumen of ClickClean to optimize image



Gap between scope and ClickClean

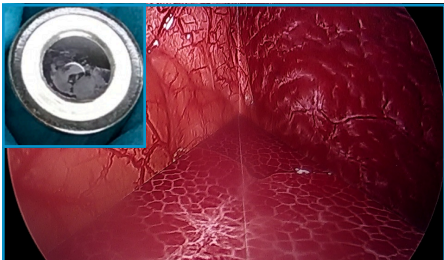
Peripheral light reflection may occur



Placed correctly

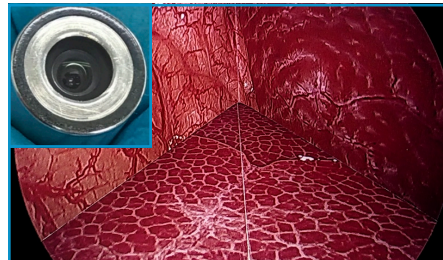
Trouble shoot if a visual obstruction occurs

Clean and dry the scope if visual obstruction does not clear after multiple clicks



Soiled scope with ClickClean

Cloudy and burry image at bottom left corner



Cleaned scope with ClickClean

Clinical nurse checklist

1. Attach jig to top of the ClickClean with the wings pointing towards the back.
2. Clean and Dry Scope and Lens prior to inserting the scope into the ClickClean device. Do Not apply anti-fog or cleaning solutions.
3. Insert scope fully until it reaches the distal end of the ClickClean canula and visualize to confirm placement. Do not use excessive force.
4. Rotate locking wheel so the lock icon can be seen on the top of the ClickClean through the window of the jig.
5. Pre-warm ClickClean for at least 5 minutes, no longer than 45 minutes.
 - Wrap warmer around the ClickClean before activation of warming bag and keep ClickClean in the warming bag until needed for surgery.
 - Place towel over warming bag if desired.
6. 10mm ClickClean requires the use of a 12 mm trocar; 5mm ClickClean requires 5mm Applied Medical trocar or 7mm other brand trocar.

Camera holder checklist

1. Do not dip in fluids, use pads, anti-fog or cleaning solutions.
2. Confirm that the scope is fully inserted into the ClickClean canula and locked.
 - Note: When using the 30 degree scope, if a halo is seen on the screen, slightly twist the scope to eliminate the halo (a halo is caused by a reflection from the canula).
3. Fully press and release the trigger 2-3 times as needed.
4. White balance and refocus the scope with the ClickClean as needed.
5. If the view becomes hazy during the case, feel free to click at any time as this WILL NOT disrupt the flow of the procedure.
 - ClickClean provides a total of 60 clicks during the procedure. At 60 clicks, black warning line(s) appear then disappear.
6. Do not rub ClickClean against tissue to clean. Click as needed.
7. Do not remove scope from abdomen cavity for more than 30 secs., ClickClean may not be usable.

Surgeon checklist

1. Do Not use ClickClean with an optical trocar for the initial trocar insertion.
 - Use a 0 degree scope without the ClickClean device.
 - Insert the ClickClean device once the optical obturator is removed.